

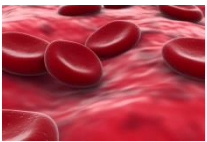
C. Blood Notes

Blood is made up of **4** components (parts):

1. **Red Blood Cells**
2. **White Blood Cells** *RBC + WBC + Platelets = solid portion (45%)
3. **Platelets**
4. **Plasma** *Plasma = liquid portion (55%)

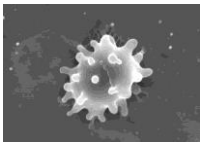


1. **Red Blood Cells** (erythrocytes)



- a. Carries **oxygen** & **carbon dioxide**
- b. Contain **hemoglobin**, an iron compound which makes blood red & acts like a magnet to **O₂** & **CO₂**
- c. Made in **bone marrow**; destroyed in **liver & spleen**
- d. **Most** numerous (~500 RBC: 1 WBC)

2. **White Blood Cells** (leukocytes)



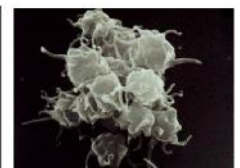
- a. **Fights** bacteria, viruses & invaders to keep you healthy. **More** are made when you are **sick!**
- b. Some can **leave** the bloodstream to go after invading organisms.
- c. Made in **bone marrow**

3. **Platelets** (thrombocytes)

- a. Helps blood to **clot** a cut → stops **bleeding**
- b. With the help of **fibrin** (a chemical that forms a net), forms a **scab**
- c. **Smallest** of solids in blood → **cell fragments**



Resting platelets



Activated platelets

4. **Plasma**

- a. Carries **digested nutrients** to cells & **wastes** away
 - b. **Straw**-colored or clear
 - c. **Liquid** part of blood; **90%** water
- a. Plasma that is not in blood vessels which keeps our body cells moist is called **lymph**. Ex: liquid in a blister

